



**A VISUAL STORY FOR THE RELAXED
PERFORMANCE OF**

ALADDIN



**AT THE MARKET PLACE
THEATRE, ARMAGH**

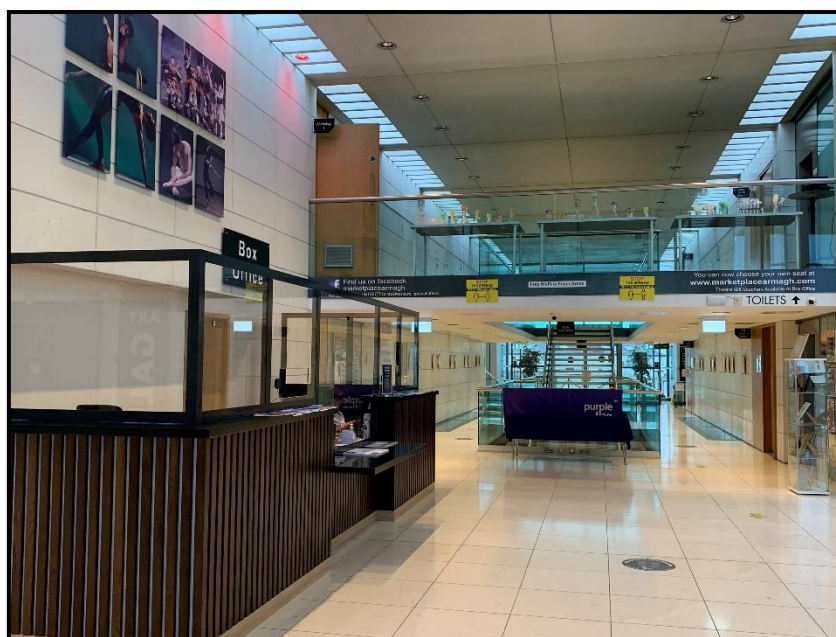
**TUES 5 DEC AT 1PM &
SAT 9 DEC AT 11AM**

This visual story is designed for visitors to the relaxed performance of Aladdin to help prepare you if you are curious or anxious about your visit.

Aladdin is taking place at The Market Place Theatre in Armagh. The Market Place Theatre will be open from 9.30am on the day of the relaxed performance. The auditorium (where the pantomime is being shown) will be open at **12.30pm** for the performance **on Tues 5th December** and **10.30am** for the performance **on Sat 9th December**.



When you enter the building, you will go into the foyer. This is a large area where you can wait before going into the auditorium. This can be quite busy and noisy before the performance as everyone waits to go in and see the show. There will also be announcements made through the tannoy (a sort of loudspeaker) to let you know when to go to your seat.



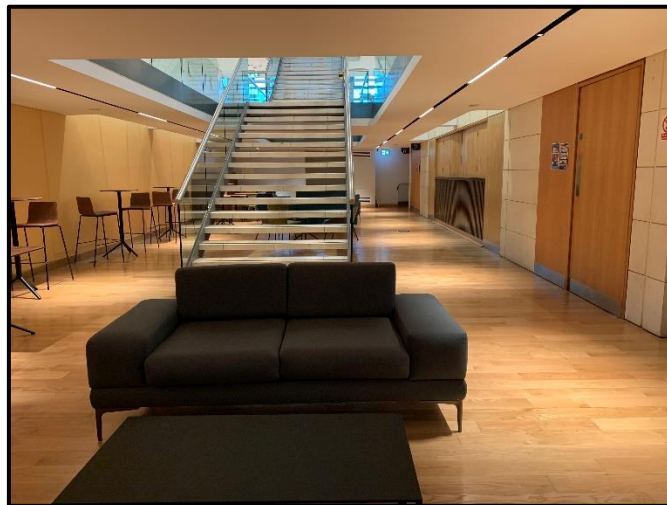
Also in the foyer is the Box Office. The Box Office is a place where you can pick up your tickets from a member of staff. If your tickets have already been sent to you in the post you won't need to go to the Box Office.



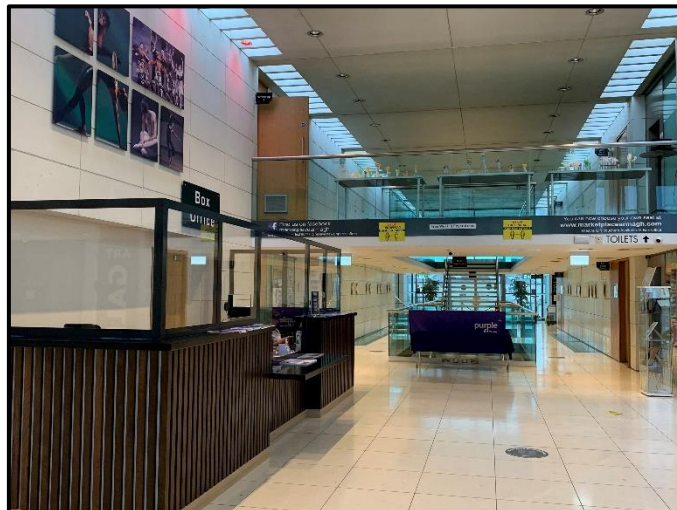
As you go through the foyer and into the Auditorium or Studio, you will see refreshments areas where you can purchase drinks and snacks.



If your seat is in the Stalls, you will walk downstairs and then through here:



If you are sitting in the Mid Gallery you will walk along here:



If you are sitting in the Upper Gallery you will walk upstairs and then along here:



There are toilets at the theatre on two different levels. If you need to use the toilet during the performance that's no problem, just ask a Front of House Attendant to show you where they are. There are also signs to show you where the toilets are.



When you reach the auditorium you will need to show your tickets to a Front of House Attendant. This is someone who works for the Theatre. They will be wearing a name badge. They will tell you where your seats are. The numbers on your tickets tell you where you have to sit.

The inside of the theatre where the seats are is called the auditorium. It is big and there are lots of seats. There are three different levels in the auditorium. You might be sitting close to the stage or you may be high up and looking down on the stage.



When you get to your seats you can sit down and relax. There will be lots of other people sitting near you and it will be quite noisy.



When it is time for the show to start you will hear a voice asking everyone to turn off their mobile phones. This voice is coming through a speaker. The theatre will get a little darker and everyone will be quiet. You will need to be as quiet as you can during the show so that you can hear everything.



When the show starts, actors will come onto the stage and start to sing and talk to the audience. Seeing a show is like watching television, or a film, but the people in a show are on a stage and they are called actors.



Aladdin is a special kind of show called a pantomime. The actors will tell a story by talking, singing and dancing.

You will have a lot of fun during the performance. There may be many different characters who will wear bright and colourful costumes. They will tell their story by talking, singing and dancing. There may be lights and loud noises right from the very start of the performance. There will also be some characters who might appear a little scary, but don't worry, as the actors are only trying to tell the story in a funny way, and nothing is going to hurt you. Sometimes it might be loud but don't worry, nothing will hurt you. You can put your hands over your ears, or wear your headphones (if you brought some with you).



After each song, some people will clap. Clapping is nice because it tells the actors you liked their song. If you want to clap, you can. You don't have to clap if you don't want to.



In the middle of the show, there is a break for around 15 minutes. This break is called an interval. During the interval you can use the toilet and have a drink or a snack.

After the interval, everyone will come back and sit down in their seats again. It will get a little darker and quieter again just like at the beginning of the show. The actors will come back on the stage and finish telling the Aladdin story.

At the end of the show, all of the actors will come out on stage and take a bow. This is called a curtain call. Many people will clap a lot so the actors know how much they liked the show. They may also stand up and clap if they really liked the show.

After the show is over, you will leave the theatre. You might not leave the same way that you came into the theatre.

Here are some photos of some of the characters you will see in Aladdin



USEFUL INFORMATION ON THE DAY

Chill-Out Area: If you want to leave the auditorium at any time during the performance, there is a chill-out area that you can visit. You can go to this area to relax if you need a break before going back in to the performance. If you need to, you can ask the Front of House staff where the chill-out area is and they will show you the way.



Performance Times: The pantomime is shown in two halves with a 15-minute break in the middle called the interval and is a total of 2 hours long.

Food and Drink: Food and drink is not allowed in the Auditorium but you can have a drink or a snack during the interval.



Show Changes: For relaxed performances, the sound and lighting and some other small aspects of the show will be altered to reduce anxiety and to provide a less stressful experience. Also, if you need to talk during the show or to take a break, that's fine. Just ask the Front of House staff to show you the way to the chill-out area.

Online Theatre Tour: Our website www.marketplacearmagh.com has a 360-degree venue tour. This can be accessed from bottom of the Homepage and allows you to see the auditorium and other areas of the building online before your visit.

We hope you have a lovely time at Aladdin.