

A VISUAL STORY FOR THE RELAXED
PERFORMANCE OF
BEAUTY & THE BEAST



**AT THE MARKET PLACE
THEATRE, ARMAGH**

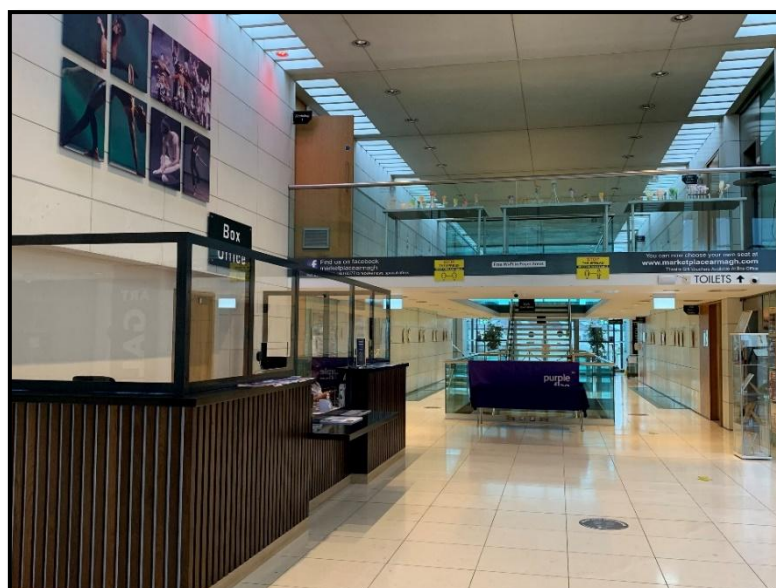
**TUES 2 DEC AT 1PM &
SAT 6 DEC AT 11AM**

This visual story is specially designed to give you an idea of what to expect when you come along to The Market Place to see Beauty & The Beast.

The Market Place Theatre will be open from 9.30am on the day of the performance. The auditorium (where the pantomime is being shown) will be open at **12.30pm** for the performance **on Tuesday 2nd December** and **10.30am** for the performance **on Saturday 6th December**.



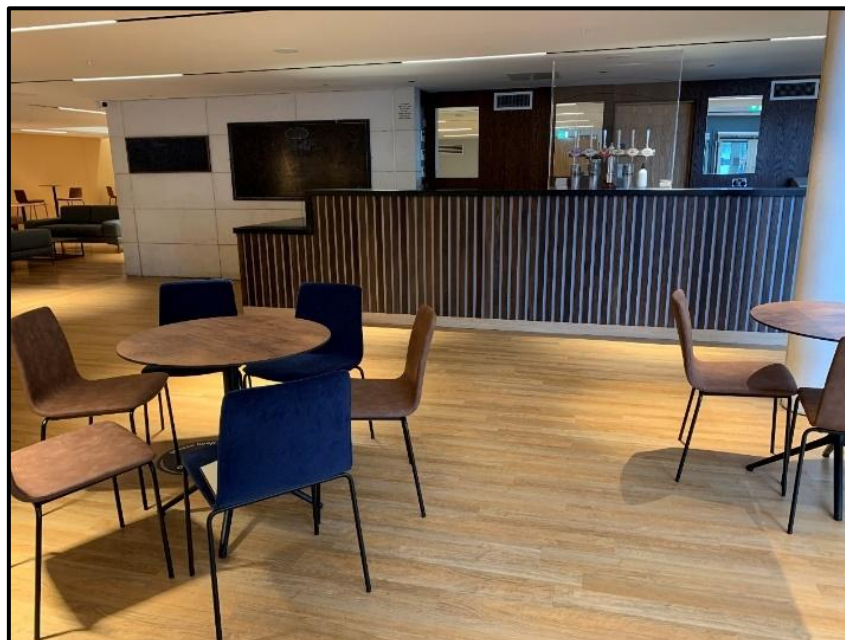
When you enter the building, you will go into the foyer. This is a large area where you can wait before going into the auditorium. This area can be quite busy and noisy before the performance as everyone waits to go in and see the show. There will also be announcements made through the tannoy (a sort of loudspeaker) to let you know when you can go into the auditorium and take your seat.



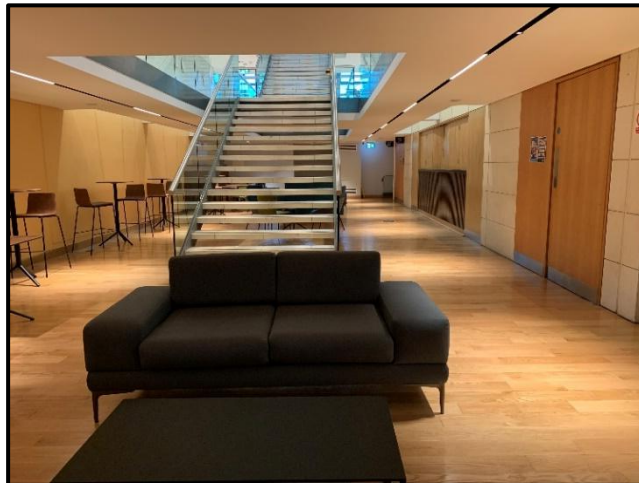
Also in the foyer is the Box Office. The Box Office is a place where you can pick up your tickets from a member of staff. If your tickets have already been sent to you in the post or in an email, then you won't need to go to the Box Office.



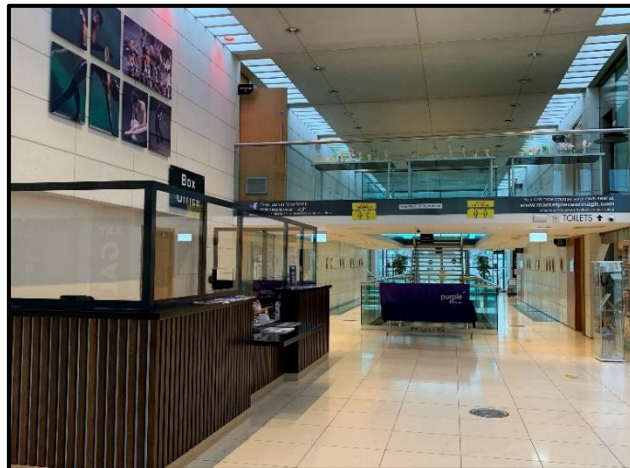
There is an area down the stairs where you can purchase some drinks or snacks if you like.



If your seat is in the **Stalls**, you will walk downstairs and then through here:



If you are sitting in the **Mid Gallery**, you will walk along here:



If you are sitting in the **Upper Gallery**, you will walk upstairs and then along here:



There are toilets at the theatre on two different levels. If you need to use the toilet during the performance that's no problem, just ask a Front of House Attendant to show you where they are. A Front of House Attendant is someone who works for the Theatre. They will be wearing a name badge. There are also signs to show you where the toilets are.



When you reach the auditorium, you will need to show your tickets to a Front of House Attendant. They will tell you where your seats are. The numbers on your tickets tell you where you have to sit.

The inside of the theatre where the seats are is called the auditorium. It is big and there are lots of seats. There are three different levels in the auditorium. You might be sitting close to the stage, or you may be high up and looking down on the stage.

When you get to your seats you can sit down and relax. There will lots of other people sitting near you and it will be quite noisy.



When it is time for the show to start you will hear a voice asking everyone to turn off their mobile phones. The theatre will get a little darker and everyone will be quiet. You will need to be as quiet as you can during the show so that you can hear everything.



When the show starts, actors will come onto the stage and the performance will begin. The performance will be lots of fun!

There will be many different characters who will wear bright and colourful costumes. They will tell their story by talking, singing and dancing.

Here are some photos of some of the characters you will see in Beauty & The Beast



There will be lights and loud noises right from the very start of the performance. There will also be some characters who might appear a little scary, but don't worry, as the actors are only trying to tell the story in a funny way, and nothing is going to hurt you. Sometimes it might be loud but don't worry, nothing will hurt you. You can put your hands over your ears or wear your headphones (if you brought some with you).



After each song, some people will clap. Clapping is nice because it tells the actors that you liked their song. If you want to clap, you can, but you don't have to clap if you don't want to.

In the middle of the show, there is a break for around 15 minutes. This break is called an interval. During the interval you can use the toilet and have a drink or a snack.

After the interval, everyone will come back and sit down in their seats again. It will get a little darker and quieter again just like at the beginning of the show. The actors will come back on the stage and finish telling the Rapunzel story.

At the end of the show, all of the actors will come out on stage and take a bow. Many people will clap a lot so the actors know how much they liked the show. They may also stand up and clap if they really liked the show.



After the show is over, you will leave the theatre. You might not leave the same way that you came into the theatre.

USEFUL INFORMATION ON THE DAY

Chill-Out Area

If you want to leave the auditorium at any time during the performance, there is a chill-out area that you can visit.

You can go to this area to relax if you need a break before going back into the performance. If you need to, you can ask the Front of House staff where the chill-out area is, and they will show you the way.



Performance Times

The pantomime is shown in two halves with a 15-minute break in the middle called the interval and is a total of 2 hours long.

Food and Drink

Food and drink is not allowed in the Auditorium but you can have a drink or a snack during the interval.

Show Changes

For relaxed performances, the sound and lighting and some other small aspects of the show will be altered to reduce anxiety and to provide a less stressful experience.

Also, if you need to talk during the show or to take a break, that's fine. Just ask the Front of House staff to show you the way to the chill-out area.

Online Theatre Tour

Our website www.marketplacearmagh.com has a 360-degree venue tour. This can be accessed from bottom of the Homepage and allows you to see the auditorium and other areas of the building online before your visit.

We hope you have a lovely time at Beauty & The Beast!